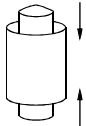
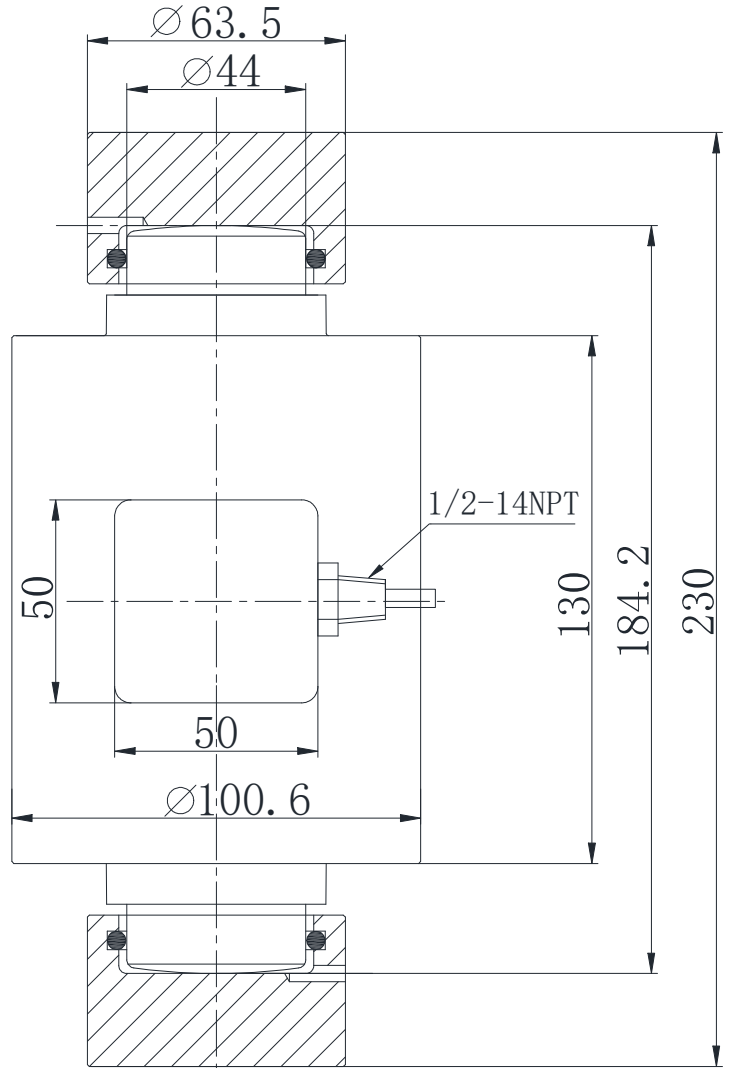


ZS04

load cells

Self-restoring rockerpin load cells



汽车衡、轨道衡、轴量秤、地上衡
Truck scale, railway scale, axle wheel scale, floor scale

Specifications 技术说明 Exc+激励正 (Red,红);Exc-激励负(Black,黑);Sig+信号正(Green,绿);Sig-信号负(White,白)

Item 项目	Unit 单位	Parameter 参数	
Accuracy class to OIML R60 精度等级		C 2	C 3
Maximum capacity (E_{max}) 额定载荷	klb	50	
Minimum LC verification interval (V _{min})最小检定分度值	% of E _{max}	0.0200	0.0100
Sensitivity (C_n) / Zero balance 灵敏度/零点平衡	mV/V	2.0 ± 0.002 / 0 ± 0.02	
Temperature effect on zero balance (TK ₀) 温度对零点影响	% of C _n /10K	±0.02	±0.0170
Temperature effect on sensitivity (TK _c) 温度对灵敏度影响	% of C _n /10K	±0.02	±0.0170
Hysteresis error (d _{hy}) 滞后误差	% of C _n	±0.0270	±0.0180
Non-linearity(d _{lin}) 非线性误差	% of C _n	±0.0250	±0.0167
Creep(d _{cr}) over 30 min. 蠕变及蠕变恢复	% of C _n	±0.030	±0.0167
Input (R_{Lc}) & Output resistance (R_o) 输入&输出电阻	Ω	1150 ± 10 & 1050 ± 5	
Nominal range of excitation voltage (B_u) 额定电压	V	5~12	
Insulation resistance (R _{is}) at 50Vdc 绝缘电阻	MΩ	> 5000	
Service temperature range (B _{tu}) 工作温度	°C	-30...+70	
Safe load limit (E _L) & Breaking load (E _d) 安全承载&破坏载荷	% of E _{max}	150 & 250	
Protection class according to EN 60 529 (IEC 529) 保护等级		IP68	
Material :Measuring element+housing 材料:测量元件 + 壳体		Stainless or alloy steel + Stainless steel	