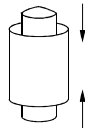


ZS01

Self-restoring rockerpin load cells



汽车衡、轨道衡、轴量秤、地上衡
Truck scale, railway scale, axle wheel scale, floor scale

Special features 特点

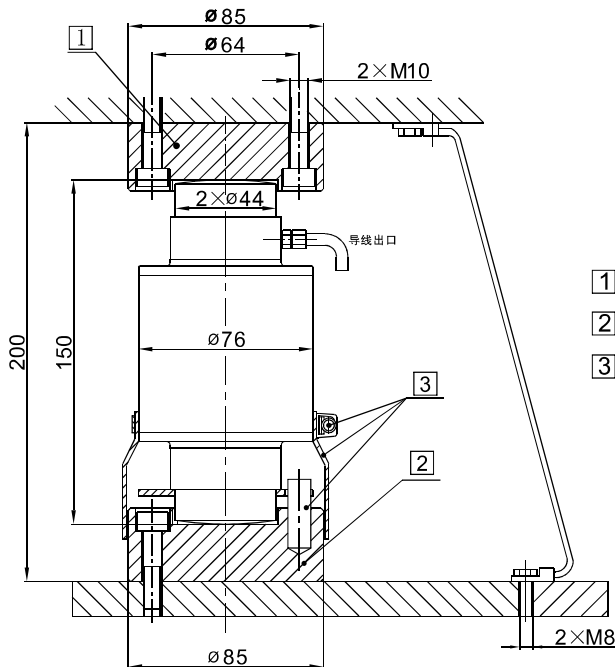
- Self-restoring function
- Nominal loads: 10t~50t
- Simple to install
- Laser welded, IP68
- Legal for trade verification
- Optimized for parallel connection by corner pre-adjustment
- Meets EMC/ESD requirements according to EN 45 501
- 自复位功能
- 额定称重范围: 10t ~ 50t
- 激光焊接IP68
- 贸易许可认证
- 经过角差预调整适合并联使用(按EN 45 501)

Specifications 技术说明 Exc+激励正 (Red,红);Exc-激励负(Black,黑);Sig+信号正(Green,绿);Sig-信号负(White,白)

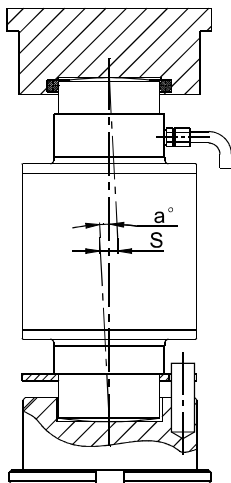
Item 项目	Unit 单位	Parameter 参数					
Accuracy class to OIML R60 精度等级		C 2		C 3			
Maximum capacity (E_{max}) 额定载荷	t	10,15,20,30,40,50					
Minimum LC verification interval (V _{min}) 最小检定分度值	% of E _{max}	0.0200		0.0100			
Sensitivity (C_n) / Zero balance 灵敏度/零点平衡	mV/V	2.0 ± 0.002 / 0 ± 0.02					
Temperature effect on zero balance (TK ₀) 温度对零点影响	% of C _n /10K	±0.02		±0.0170			
Temperature effect on sensitivity (TK _c) 温度对灵敏度影响	% of C _n /10K	±0.02		±0.0170			
Hysteresis error (d _{hy}) 滞后误差	% of C _n	±0.0270		±0.0180			
Non-linearity(d _{lin}) 非线性误差	% of C _n	±0.0250		±0.0167			
Creep(d _{cr}) over 30 min. 蠕变及蠕变恢复	% of C _n	±0.030		±0.0167			
Input (R_{LC}) & Output resistance (R₀) 输入&输出电阻	Ω	700 ± 20 & 703 ± 3.5					
Nominal range of excitation voltage (B_u) 额定电压	V	5~12					
Insulation resistance (R _{is}) at 50Vdc 绝缘电阻	MΩ	>5000					
Service temperature range (B _{tu}) 工作温度	°C	-30...+70					
Safe load limit (E _L) & Breaking load(E _d) 安全承载&破坏载荷	% of E _{max}	150 & 250					
Protection class according to EN 60 529 (IEC 529) 保护等级		IP68					
Material :Measuring element+housing 材料:测量元件 + 壳体		Stainless or alloy steel + Stainless steel					
Maximum capacity (E _{max}) 额定载荷	t	10	15	20	30	40	50
Min. scale verification (e _{min}) according to En45501 [...#]=max. Number of load cells 秤的最小检定分度值	kg	5 [6#]	5 [6#]	5 [6#] 10 [8#]	10 [8#]	10 [6#] 20 [8#]	10 [4#] 20 [10#]
Recommended maximum weighing capacity of scale 推荐秤的额定载荷	t	20	30	50 80	100	120 150	100 200
Deflection at E _{max} (s _{nom}) ,approx 最大载荷下的变形量	mm	0.55	0.55	0.65	0.75	0.85	0.85
Weight(G),approx 重量	kg	2.8	3.2	3.2	3.6	3.6	3.8
Cable 电缆: Diameter 直径: ∅5mm Length 长度	m	10	12	12	14	16	16

柱式 Column Type

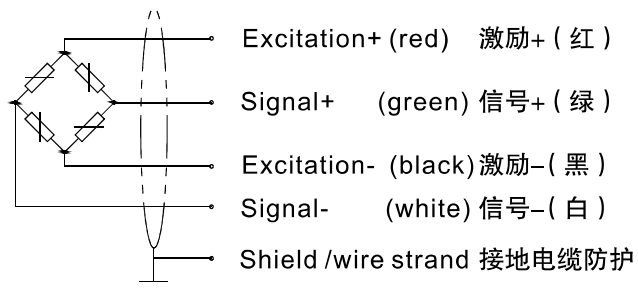
Mounting variation: 安装方式:



- ① CTA/ZOU B1
- ② CTA/ZOU2 B2
- ③ Dowel pin $\Phi 10 \times 30$ (rotation stop), flexible tube and tube clip enclosed in the packing of the load cell
防旋转插销, 伸缩管与管夹在传感器包装中



Wiring code (4-wire circuit)
电缆芯线色标 (四线制)



Maximum capacity (E _{max}) 额定载荷	t	10	15	20	25	30	40	50
R ball 球头半径	mm	130	130	160	160	160	180	180
a _{max} 最大允许倾斜角度	" ° " 度	4.8	4.8	4.8	4.8	4.8	4.8	4.5
S _{max} 最大允许侧向偏移	mm	12	12	12	12	12	12	10.5
FR(% of applied load) 回复力 (施力大小的百分比)	at S _{max}	6.3	6.3	9.8	9.8	9.8	12	12
	at S=1mm	0.48	0.48	0.75	0.75	0.75	0.93	0.93