

# Vortex Flowmeter series

## Features

- No moving parts, long-term stability, simple structure, easy to install and maintain;
- The output is pulse frequency which is linear with the actual flow rate of the fluid being measured, the zero point has no drift; diverse structure available, including pipeline and plug-in sensors;
- The pressure loss is small (about 1/4~1/2 of that for orifice flow meter), an energy-saving flowmeter;
- The installation method is flexible. According to the different process pipelines on site, it can be installed horizontally, vertically and inclinedly at different angles;
- Adopt noise elimination circuit and anti-vibration sensor head, which has certain anti-environmental vibration performance;
- Use ultra-low power consumption single-chip microcomputer technology, one pc of 3V10AH lithium battery can work for more than 5 years;
- EEPROM is used for power-down protection of accumulated flow, and the protection time is more than 10 years.



### ■ Technical index

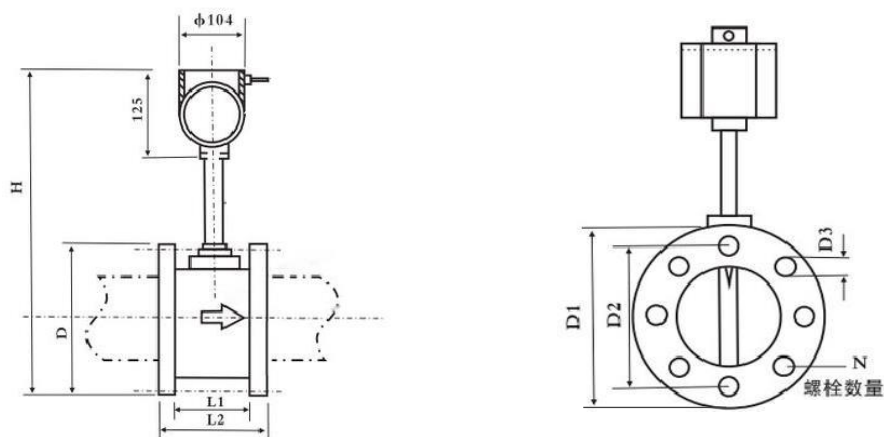
- 1、 Accuracy class: 1.0, 1.5
- 2、 Nominal pressure: 1.6MPa, 2.5MPa, 4.0MPa and above
- 3、 The measured medium temperature: -40℃~350℃
- 4、 Pressure loss: resistance coefficient  $cd \leq 2.4$
- 5、 Power supply: 12 ~ 24VDC
- 6、 Explosion-proof level: Ia II CT6 (intrinsic safety explosion-proof)
- 7、 Output signal: voltage pulse low level  $\leq 1V$ , high level  $\geq 6V$ , standard current signal 4~20mA

### ■ Flow range

 m<sup>3</sup>/h

DN (mm)	Liquid (medium: room temperature water)		Gas Medium: Air at 20℃ 101325Pa	
	Normal form	Extended type		
15	0.8~6	0.5~8	6~40	5~50
20	1~8	0.6~12	8~50	6~60
25	1.5~12	0.8~16	10~80	8~120
40	2.5~30	2~40	25~200	20~300
50	3~50	2.5~60	30~300	25~500
65	5~80	4~100	50~500	40~800
80	8~120	6~160	80~800	60~1200

100	12~200	8~250	120~1200	100~2000
125	20~300	12~400	160~1600	150~3000
150	30~400	18~600	250~2500	200~4000
200	50~800	30~1200	400~4000	350~8000
250	80~1200	40~1600	600~6000	500~12000
300	100~1600	60~2500	1000~10000	600~16000
400	200~3000	120~5000	1600~16000	1000~25000
500	300~5000	200~8000	2500~25000	1600~40000
600	500~8000	300~10000	4000~40000	2500~60000



(mm)

DN	L1	L2	D1	D2	H	D3	N
20	65	95	125	100	460	13	4
25	65	95	125	100	460	13	4
40	75	109	145	110	470	13	4
50	75	109	160	125	481	17	4
65	75	117	180	145	497	17	6
80	80	122	195	160	510	17	6
100	90	132	230	190	544	17	8
125	100	146	245	210	564	17	8
150	120	170	280	240	594	21	8
200	150	200	335	295	646	21	12
250	160	214	405	355	708	21	12
300	170	224	460	410	760	21	12

## YSLU-Z Warm pressure type

### Features

- Double row LCD, 8-bit digital display
- Small signal cutting set by the user
- 4~20mA two-wire current output (according to order) online temperature, pressure compensation, manual set density compensation
- 12V~24V or 3.6V lithium power supply
- Temperature and pressure integrated vortex flowmeter with temperature and pressure compensation, more convenient installation



## YSLU-X Liquid crystal type

### Features

- Double row LCD, 8-bit digital display
- Small signal removal is set by the user
- 4~20mA two-wire current output (according to order)
- Online temperature compensation, manual set density compensation 12V~24V or 3.6V lithium power supply

## Flow range of the plug-in vortex flowmeter

### Features

The plug-in vortex flow sensor is suitable for measuring superheated steam, saturated steam, general gas and liquid above DN200 pipeline. Can be displayed on site or remote output; The installation is convenient and the price is cheap. Accuracy:  $\pm 1.5\%$ ,  $\pm 2.5\%$ .



DN (mm)	200	250	300	350	400	450	500
Liquid (m <sup>3</sup> /h)	55~ 570	88~ 885	125~ 1275	170~ 1735	225~ 2265	286~ 2670	350~ 3540
Gas (m <sup>3</sup> /h)	560~ 4530	880~ 7070	1270~ 10180	1730~ 13860	2260~ 18100	2860~ 22905	3530~ 28275
DN (mm)	600	700	800	900	1000	1100	1200
Liquid (m <sup>3</sup> /h)	505~ 5090	690~ 6930	900~ 9050	1145~ 11450	1410~ 14140	1710~ 17110	2035~ 20360

Gas (m <sup>3</sup> /h)	5080~ 40715	6925~ 55420	9045~ 72380	11450~ 91605	14135~ 113095	17100~ 136840	20235~ 162850
DN (mm)	1300	1400	1500	1600	1800	2000	
Liquid (m <sup>3</sup> /h)	2385~ 23895	2770~ 27710	3170~ 31800	3610~ 36200	4580~ 45850	5650~ 56550	
Gas (m <sup>3</sup> /h)	23890~ 191125	27705~ 221160	31700~ 254455	36105~ 289510	45750~ 366410	56545~ 452365	

## Model Code Selection Table

		YSLU	XXX	X	X	X	X	X	X
Nominal diameter (mm)	2-4 digits15~2000								
Connection mode	Flange type			A					
	Flange fitting type			B					
	Thread			C					
	Hygienic			D					
	Plug-in			E					
Measuring medium	liquid					1			
	General gas					2			
	Saturated steam					3			
	Superheated steam					4			
Output	Standard signal						A		
	RS485						B		
	HART						C		
Special mark	Field display							X	
	High Temp. (350℃)							G	
	Temp.compensation							W	
	Pressure compensation							Y	
	Temp.and pressure compensation							Z	
Nominal pressure	1.6MPa								1
	2.5MPa								2
	4.0MPa								3
	Others								4