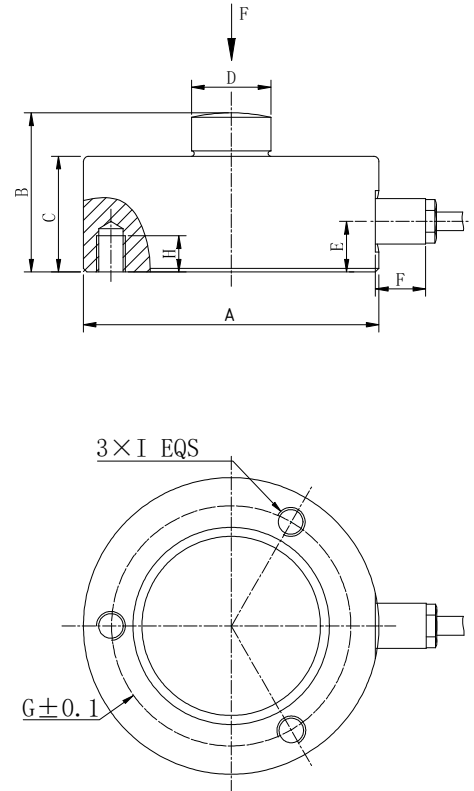


YBS03 Load cells



E _{max} [t]	1,3,5,10,15	30
A	∅82	∅100
B	44	48
C	32	35
D	∅22	∅28
E	14	14
F	18	18
G	∅70	∅80
H	17	23
I	M8	M10



Specifications 技术说明 Exc+激励正 (Red,红);Exc-激励负(Black,黑);Sig+信号正(Green,绿);Sig-信号负(White,白)

Item 项目	Unit 单位	Parameter 参数
Accuracy class 精度等级		0.05
Maximum capacity (E_{max}) 额定载荷	t	1,2,3,5,10,30
Minimum LC verification interval (V _{min}) 最小检定分度值	% of E _{max}	0.1
Sensitivity (C_n) / Zero balance 灵敏度/零点平衡	mV/V	2.0±0.005/0-0.02
Temperature effect on zero balance (TK ₀) 温度对零点影响	% of C _n /10K	±0.2
Temperature effect on sensitivity (TK _c) 温度对灵敏度影响	% of C _n /10K	±0.2
Hysteresis error (d _{hy}) 滞后误差	% of C _n	±0.5000
Non-linearity (d _{lin}) 非线性误差	% of C _n	±0.5000
Creep(d _{cr}) over 30 min. 蠕变及蠕变恢复	% of C _n	±0.5000
Input (R_{LC}) & Output resistance (R₀) 输入&输出电阻	Ω	750±20/702±3
Nominal range of excitation voltage (B_u) 额定电压	V	5~12
Insulation resistance (R _{is}) at 50Vdc 绝缘电阻	MΩ	≥5000
Service temperature range (B _{tu}) 工作温度	°C	-30...+70
Safe load limit (E _L) & Breaking load (E _d) 安全承载&破坏载荷	% of E _{max}	150 & 200
Protection class according to EN 60 529 (IEC 529) 保护等级		IP68
Material :Measuring element 材料:测量元件 Cable fitting 电缆配件/Cable sheath 电缆护套		Stainless or alloy steel Nickel-plated brass/PVC
Deflection at E _{max} (s _{nom}), approx 最大载荷下的变形量	mm	<0.07
Weight(G),approx 重量	kg	1.5
Cable 电缆: Diameter 直径: ∅5mm Length 长度	m	4.5