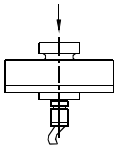
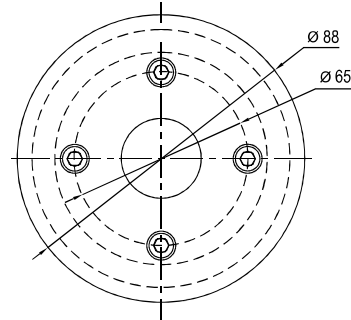
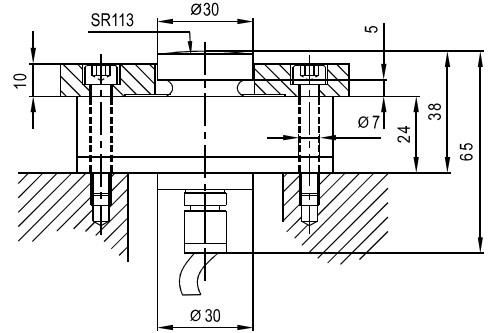


YBS02 Load cells



轮轴识别器

Axle wheel identify unit



Specifications 技术说明 Exc+激励正 (Red,红);Exc-激励负(Black,黑);Sig+信号正(Green,绿);Sig-信号负(White,白)

Item 项目	Unit 单位	Parameter 参数
Accuracy class 精度等级		0.5
Maximum capacity (Emax) 额定载荷	t	3
Minimum LC verification interval (Vmin) 最小检定分度值	% of Emax	0.1
Sensitivity (Cn) / Zero balance 灵敏度/零点平衡	mV/V	1.2 ± 0.1 / +0.024~+0.0480
Temperature effect on zero balance (TK0) 温度对零点影响	% of Cn/10K	±0.02
Temperature effect on sensitivity (TKc) 温度对灵敏度影响	% of Cn/10K	±0.02
Hysteresis error (dhy) 滞后误差	% of Cn	±0.5000
Non-linearity(dlin) 非线性误差	% of Cn	±0.5000
Creep(dcr) over 30 min. 蠕变及蠕变恢复	% of Cn	±0.2000
Input (RLc) & Output resistance (Ro) 输入&输出电阻	Ω	730 ± 30 & 702 ± 3
Nominal range of excitation voltage (Bu) 额定电压	V	5~12
Insulation resistance (Ris) at 50Vdc 绝缘电阻	MΩ	≥5000
Service temperature range (Btu) 工作温度	℃	-30...+70
Safe load limit (EL) & Breaking load (Ed) 安全承载&破坏载荷	% of Emax	150 & 180
Protection class according to EN 60 529 (IEC 529) 保护等级		IP67
Material :Measuring element 材料:测量元件 Cable fitting 电缆配件/Cable sheath 电缆护套		Stainless or alloy steel Stainless steel /PVC
Deflection at Emax (snom) ,approx 最大载荷下的变形量	mm	<0.07
Weight(G),approx 重量	kg	1.5
Cable 电缆: Diameter 直径: Ø5mm Length长度	m	7