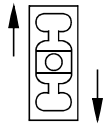
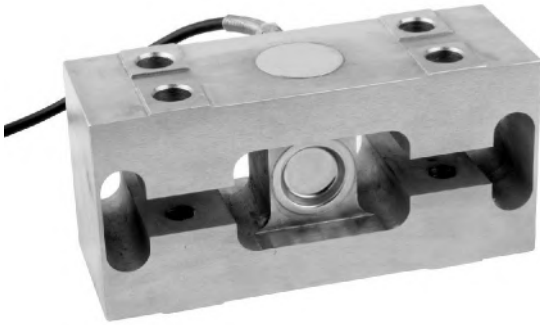


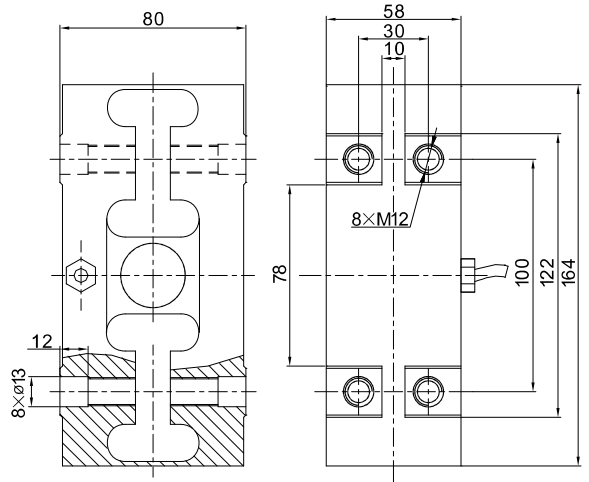
# XS06 Load cells



Forklift scale, crane mechanism  
叉车秤、起重机械

## Special features 特点

- Inoxydable materials, laser sealed, IP68
- Complies with OIML R60 regulations up to 1000d
- Especially for use in refuse collectors and for wall mounting of tanks
- 耐腐蚀性材料，激光焊接，IP68
- 根据OIML R60可达1000d
- 尤其适用于垃圾回收应用，罐的墙体安装



## Specifications 技术说明 Exc+激励正 (Red,红);Exc-激励负(Black,黑);Sig+信号正(Green,绿);Sig-信号负(White,白)

Item 项目	Unit 单位	Parameter 参数	
Accuracy class to OIML R60 精度等级		D1	C 1
<b>Maximum capacity (E<sub>max</sub>) 额定载荷</b>	<b>kg</b>	<b>550,880</b>	
Minimum LC verification interval (V <sub>min</sub> ) 最小检定分度值	% of E <sub>max</sub>	0.0357	0.0180
<b>Sensitivity (C<sub>n</sub>) / Zero balance 灵敏度/零点平衡</b>	<b>mV/V</b>	<b>1.2 ± 0.006 / 0+0.03</b>	
Temperature effect on zero balance (TK <sub>0</sub> ) 温度对零点影响	% of C <sub>n</sub> /10K	±0.03	
Temperature effect on sensitivity (TK <sub>c</sub> ) 温度对灵敏度影响	% of C <sub>n</sub> /10K	±0.03	
Hysteresis error (d <sub>hy</sub> ) 滞后误差	% of C <sub>n</sub>	±0.0500	
Non-linearity(d <sub>lin</sub> ) 非线性误差	% of C <sub>n</sub>	±0.0500	
Creep(d <sub>cr</sub> ) over 30 min. 蠕变及蠕变恢复	% of C <sub>n</sub>	±0.0490	
<b>Input (R<sub>Lc</sub>)&amp;Output resistance (R<sub>o</sub>) 输入&amp;输出电阻</b>	<b>Ω</b>	<b>400 ± 20 &amp; 352 ± 3</b>	
<b>Nominal range of excitation voltage (B<sub>u</sub>) 额定电压</b>	<b>V</b>	<b>5~12</b>	
Insulation resistance (R <sub>is</sub> ) at 50Vdc 绝缘电阻	MΩ	>5000	
Service temperature range (B <sub>tu</sub> ) 工作温度	°C	-30...+70	
Safe load limit (E <sub>L</sub> ) & Breaking load(E <sub>d</sub> ) 安全承载&破坏载荷	% of E <sub>max</sub>	150 & 300	
Permissible dynamic load(F <sub>srel</sub> ) 允许动态承载 (Vibration amplitude according to DIN 50100)	% of E <sub>max</sub>	70	
<b>Protection class according to EN 60 529 (IEC 529)保护等级</b>		<b>IP68</b>	
Material :Measuring element 材料:测量元件		Stainless or alloy steel	
Maximum capacity (E <sub>max</sub> ) 额定载荷	kg	550	880
Deflection at E <sub>max</sub> (s <sub>nom</sub> ) ,approx最大载荷下的变形量	mm	0.35	
Weight(G),approx 重量	kg	3.5	
Cable 电缆: Diameter 直径:ø6mm Length长度	m	3	