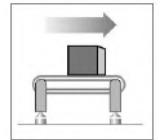
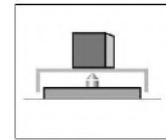
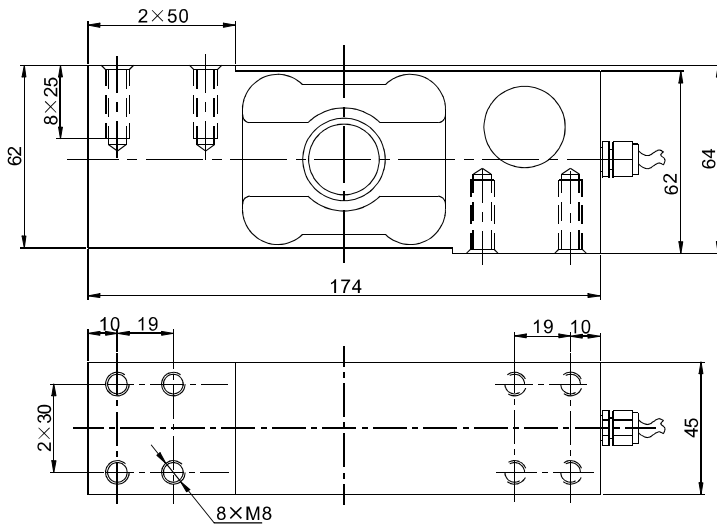


XS04 Load cells



Specifications 技术说明 Exc+激励正 (Red,红);Exc-激励负(Black,黑);Sig+信号正(Green,绿);Sig-信号负(White,白)

| Item 项目 | Unit 单位 | Parameter 参数 |
|---|--------------------------|-------------------------------------|
| Accuracy class 精度等级 | | 0.03,0.05 |
| Maximum capacity (E_{max}) 额定载荷 | kg | 250, 300, 500, 800, 1000 |
| Sensitivity (C_n) / Zero balance 灵敏度/零点平衡 | mV/V | 2±0.2 / 0±0.1 |
| Temperature effect on zero balance (TK ₀) 温度对零点影响 | % of C _n /10K | ± 0.0175 |
| Temperature effect on sensitivity (TK _c) 温度对灵敏度影响 | % of C _n /10K | ± 0.0175 |
| Hysteresis error (d _{hy}) 滞后误差 | % of C _n | ± 0.02 |
| Non-linearity(d _{lin}) 非线性误差 | % of C _n | ± 0.0270 |
| Creep(d _{cr}) over 30 min. 蠕变及蠕变恢复 | % of C _n | ± 0.0250 |
| Eccentric error 四角误差 | % | ± 0.0233 |
| Input (R_{Lc}) & Output resistance (R_o) 输入&输出电阻 | Ω | 400±20 & 352±3 |
| Nominal range of excitation voltage (B_u) 额定电压 | V | 5~15 |
| Insulation resistance (R _{is}) at 50Vdc 绝缘电阻 | MΩ | > 5000 |
| Service temperature range (B _{tu}) 工作温度 | °C | -20...+50 |
| Safe load limit (E _L) & Breaking load(E _d) 安全承载&破坏载荷 | % of E _{max} | 150 & 200 |
| Protection class according to EN 60 529 (IEC 529) 保护等级 | | IP67 |
| Material :Measuring element 材料:测量元件 | | 合金钢 Alloy steel 不锈钢 Stainless Steel |

| | | | | | | |
|--|------|------------------------------|-----|-----|-----|------|
| Maximum capacity (E _{max}) 额定载荷 | kg | 250 | 300 | 500 | 800 | 1000 |
| Min. load cell verification inter(v _{min}) 最小检定分度值 | kg | 0.05 | 0.1 | 0.1 | 0.2 | 0.2 |
| Maximum platform size 最大秤台尺寸 | mm | 600× 500 | | | | |
| Deflection at E _{max} (s _{nom}), approx 最大载荷下的变形量 | mm | < 0.5 | | | | |
| Weight(G), approx 重量 | kg | 1.8 | | | | |
| Cable 电缆: Diameter 直径: ∅5mm Length 长度 | m | 3 | | | | |
| Mounting: Cylindrical head screw 装配: 内六角圆柱头螺钉 | | M8-10.9(800~1000kg):M8-12.9) | | | | |
| Tightening torque 螺丝紧固力矩 | N. m | 25N.m(800~1000kg):35N.m) | | | | |