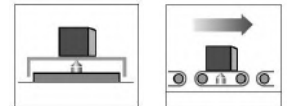
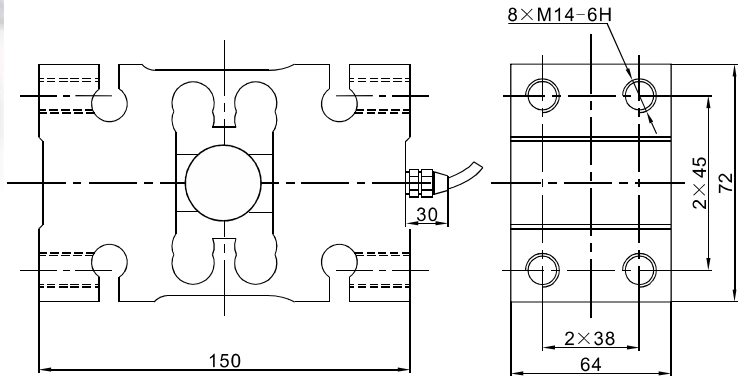


# 单点式 Single Point

## XS01 Load cells



### Specifications 技术说明 Exc+激励正 (Red,红);Exc-激励负(Black,黑);Sig+信号正(Green,绿);Sig-信号负(White,白)

| Item 项目   | Unit 单位                  | Parameter 参数                  |          |
|---|--------------------------|-------------------------------|----------|
|   |                          | C 2                           | C 3      |
| Accuracy class to OIML R60 精度等级   |                          | C 2                           | C 3      |
| <b>Maximum capacity (E<sub>max</sub>) 额定载荷</b>                                    | <b>kg</b>                | <b>250,300,500,1000</b>       |          |
| <b>Sensitivity (C<sub>n</sub>) / Zero balance 灵敏度/零点平衡</b>                        | <b>mV/V</b>              | <b>2.0 ± 0.2 / 0 ± 0.1</b>    |          |
| Temperature effect on zero balance (TK <sub>0</sub> ) 温度对零点影响                     | % of C <sub>n</sub> /10K | ± 0.0175                      | ± 0.0140 |
| Temperature effect on sensitivity (TK <sub>c</sub> ) 温度对灵敏度影响                     | % of C <sub>n</sub> /10K | ± 0.0175                      | ± 0.0140 |
| Hysteresis error (d <sub>hy</sub> ) 滞后误差  | % of C <sub>n</sub>      | ± 0.02                        | ± 0.0150 |
| Non-linearity(d <sub>lin</sub> ) 非线性误差  | % of C <sub>n</sub>      | ± 0.0270                      | ± 0.0167 |
| Creep(d <sub>cr</sub> ) over 30 min. 蠕变及蠕变恢复                                      | % of C <sub>n</sub>      | ± 0.0250                      | ± 0.0167 |
| Eccentric error 四角误差  | %                        | ± 0.0233                      |          |
| <b>Input (R<sub>Lc</sub>) &amp; Output resistance (R<sub>o</sub>) 输入&amp;输出电阻</b> | <b>Ω</b>                 | <b>400 ± 15 &amp; 352 ± 3</b> |          |
| <b>Nominal range of excitation voltage (B<sub>u</sub>) 额定电压</b>                   | <b>V</b>                 | <b>5~15</b>                   |          |
| Insulation resistance (R <sub>is</sub> ) at 50Vdc 绝缘电阻                            | M Ω                      | ≥ 5000                        |          |
| Service temperature range (B <sub>tu</sub> ) 工作温度                                 | °C                       | -20...+50                     |          |
| Safe load limit (E <sub>L</sub> ) & Breaking load(E <sub>d</sub> ) 安全承载&破坏载荷      | % of E <sub>max</sub>    | 120 & 200                     |          |
| <b>Protection class according to EN 60 529 (IEC 529) 保护等级</b>                     |                          | <b>IP65</b>                   |          |
| Material :Measuring element 材料:测量元件   |                          | 合金钢 Alloy Steel               |          |

|   |      |           |     |     |     |     |     |
|---|------|-----------|-----|-----|-----|-----|-----|
| Maximum capacity (E <sub>max</sub> ) 额定载荷                           | kg   | 50        | 100 | 200 | 300 | 500 | 750 |
| Min. load cell verification inter(v <sub>min</sub> ) 最小检定分度值        | g    | 20        | 20  | 50  | 50  | 100 | 100 |
| Maximum platform size 最大秤台尺寸  | mm   | 800 × 800 |     |     |     |     |     |
| Deflection at E <sub>max</sub> (s <sub>nom</sub> ) ,approx最大载荷下的变形量 | mm   | < 0.6     |     |     |     |     |     |
| Weight(G),approx 重量   | kg   | 4.3       |     |     | 4.5 |     |     |
| Cable 电缆: Diameter 直径: ∅5mm Length 长度                               | m    | 3m        |     |     |     |     |     |
| Mounting:Cylindrical head screw 装配:内六角圆柱头螺钉                         |      | M14-10.9  |     |     |     |     |     |
| Tightening torque 螺丝紧固力矩  | N. m | 35N.m     |     |     |     |     |     |