

THERMOOUPLE WD03



Product overview

The WD03 series armored thermocouple is the use of homogeneous conductors (A electrode and B electrode) to form a closed loop, when the two contacts are at different temperatures, there is a current through the loop, there is a thermoelectric motive force between the two contacts, the electromotive force is related to the homogeneous conductor material and the temperature difference at both ends. Thermocouples use this principle to measure temperature. It is usually used with display instruments, recording instruments, computers, etc., to directly measure the surface temperature of gas, liquid and solid in the range of 0 ° C ~1700 ° C in various production processes.

Features

- The measuring range is large and the reaction speed is fast.
- High mechanical strength, can be used in vibration, low temperature, high temperature environment.
- Small outside diameter, rapid temperature response.
- Simple installation, easy replacement, long service life.

Specifications

Type	WD03
Measuring Medium	Gas, Liquid, Steam, solidity
Range	0°C ~1700°C
Accuracy	B
Index type	K, E, S, B
Protective tube diameter	φ 6, φ 12, φ 16, etc
Protective tube material	304, 316, HG3039, corundum tube, silicon carbide tube, etc
Connection form	Waterproof type, explosion-proof type, etc
Installation mode	Fixed thread type, flange type, etc
Insulation	≥ 100MΩ (Note: When the ambient temperature is 15 ° C to 35 ° C and the relative humidity is less than 80%, the insulation resistance of the lead wire and outer bushing must be tested.)

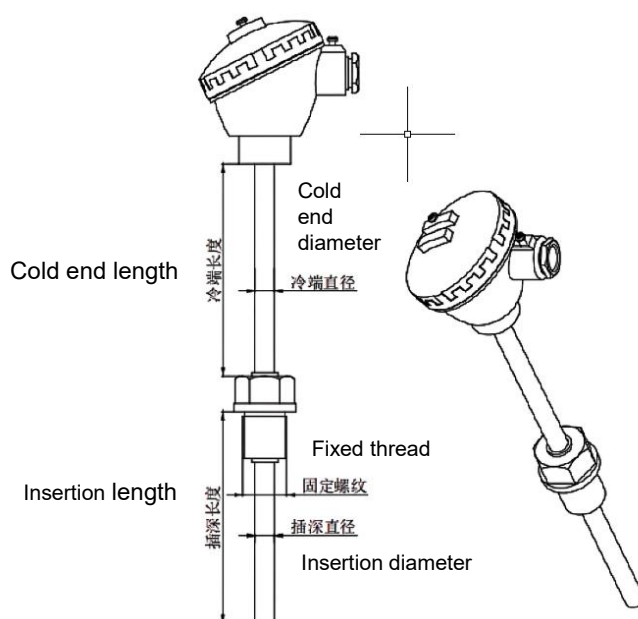
Model Code Selection Table

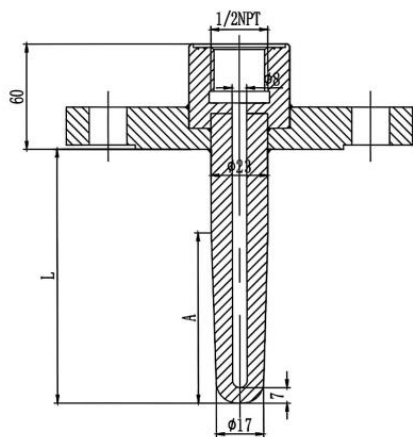
Part	Number
Selection Type	WD03
Temperature sensing element	B: B E: E K: K R: R S: S
Number of components	1: Single branch 2: Double branch
Process connection	A: Unsecured B: Fixed thread, default M27*2 (M) C: Adjustable sleeve thread, default M27*2 (M) D: Chuck connection default φ 50.5 E: Flange connection, default DN25PN16
Junction box form	1: Compact GDM connector 2: Compact IP68 straight lead 3: Waterproof type, Waterproof junction box by default 4: Explosion-proof type, default inclined explosion-proof box
Protective tube diameter	A: φ 6 B: φ 12 C: φ 16 D: φ 18 E: φ 20
Accuracy	B: Class B
Length	L*1: L Total length *1 insertion depth

Explosion-proof class	N: Non-explosion proof D: Ex d IIC T1~T6
Material	A: 304 B: 316 C: HG3039 D: Corundum tube E: Silicon carbide tube
Attachments	N: No special requirements A: Welded base B: Protective sleeve C: Anti-corrosion fluorine lining D: Wear-resistant tube must provide wear-resistant length: mm X: By customized

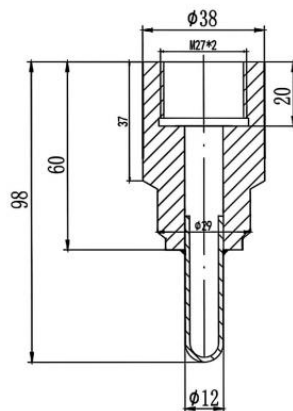
Size

Unit: mm

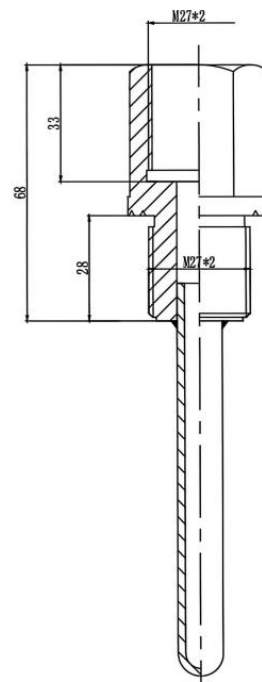




Flange type



Welded type



Threaded type