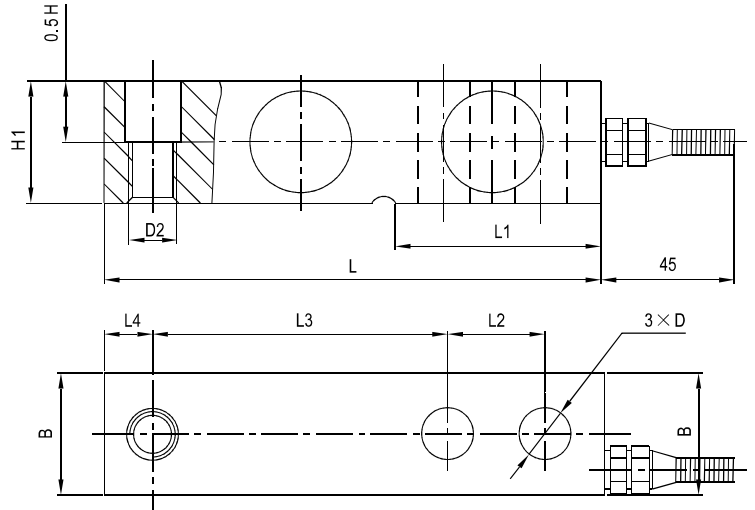
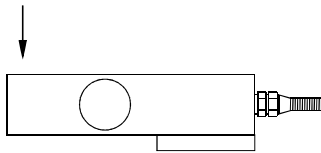


# SQB02

## Load cells



Emax[t]	L	L1	L2	L3	L4	B	H1	H2	D	D2
0.1~2.5	130	53.5	25.4	76.2	12.7	31.8	31.8	20	∅13	M12

### Specifications 技术说明

Exc+激励正 (Red,红);Exc-激励负(Black,黑);Sig+信号正(Green,绿);Sig-信号负(White,白)

Item 项目	Unit 单位	Parameter 参数		
Accuracy class to OIML R60 精度等级		C2		
<b>Maximum capacity (Emax) 额定载荷</b>	t	<b>0.1,0.25,0.3,0.5,1,1.5,2,2.5</b>		
Minimum LC verification interval (Vmin)最小检定分度值	% of Emax	0.0200		
<b>Sensitivity (Cn) / Zero balance 灵敏度/零点平衡</b>	<b>mV/V</b>	<b>3.0 ± 0.003 / 0 ± 0.03</b>		
Temperature effect on zero balance (TK0) 温度对零点影响	% of Cn/10K	±0.02		
Temperature effect on sensitivity (TKc) 温度对灵敏度影响	% of Cn/10K	±0.02		
Hysteresis error (dhy) 滞后误差	% of Cn	±0.0270		
Non-linearity(dlin) 非线性误差	% of Cn	±0.0250		
Creep(dcr) over 30 min. 蠕变及蠕变恢复	% of Cn	±0.030		
<b>Input (RLc)&amp;Output resistance (Ro) 输入&amp;输出电阻</b>	<b>Ω</b>	<b>400 ± 10 &amp; 352 ± 3</b>		
<b>Nominal range of excitation voltage (Bu) 额定电压</b>	<b>V</b>	<b>5~12</b>		
Insulation resistance (Ris) at50Vdc 绝缘电阻	MΩ	≥5000		
Service temperature range (Btu) 工作温度	℃	-30...+70		
Safe load limit (EL) & Breaking load(Ed) 安全承载&破坏载荷	% of Emax	120 & 200		
<b>Protection class according to EN 60 529 (IEC 529) 保护等级</b>		<b>IP68</b>		
Material :Measuring element 材料: 测量元件 Cable fitting 电缆配件 Cable sheath 电缆护套		Stainless or alloy steel Stainless steel or nickel-plated brass PVC		
Maximum capacity (Emax)额定载荷	klb	2.5	4	6
Deflection at Emax (snom) ,approx 最大载荷下的变形量	mm	<0.55		<0.65
Weight(G),approx 重量	kg	1.0		2.1
Cable 电缆: Diameter 直径: ∅6mm Length长度	m	3		5