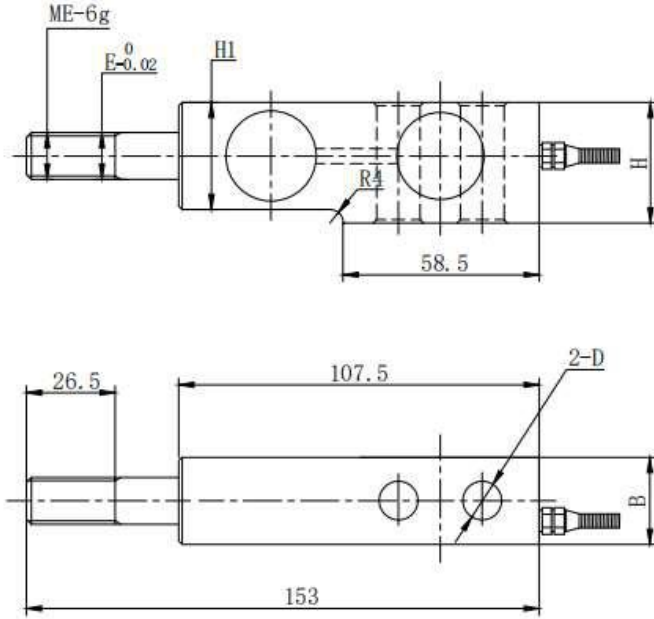


悬臂梁式 Shear Beam

SB06 Load Cells



E max[kg]	H	H1	B	D	ME
50-500	36	32	26	φ11.5	M14
750-1000	38	34	30	φ13.5	M14
2000	38	34	30	φ13.5	M20



料斗秤、皮带秤、配料系统
hopper scale, belt scale, blending system

Specifications 技术说明 Exc+激励正 (Red, 红); Exc-激励负 (Black, 黑); Sig+信号正 (Green, 绿); Sig-信号负 (White, 白)

Item 项目	Unit 单位	Parameter 参数				
		D1		C2		
Accuracy class to OIML R60 精度等级		D1		C2		
Maximum capacity (Emax) 额定载荷	t	0.5, 1, 2, 3, 5, 8				
Minimum LC verification interval (Vmin) 最小检定分度值	% of Emax	0.0350		0.0200		
Sensitivity (Cn) / Zero balance 灵敏度/零点平衡	mV/V	2.0 ± 0.002 / 0 ± 0.02				
Temperature effect on zero balance (TK0) 温度对零点影响	% of Cn/10K	±0.0250		±0.02		
Temperature effect on sensitivity (TKc) 温度对灵敏度影响	% of Cn/10K	±0.0285		±0.02		
Hysteresis error (dhy) 滞后误差	% of Cn	±0.0330		±0.0270		
Non-linearity (dlin) 非线性误差	% of Cn	±0.0300		±0.0250		
Creep (dcr) over 30 min. 蠕变及蠕变恢复	% of Cn	±0.033		±0.030		
Input (RLC) & Output resistance (Ro) 输入 & 输出电阻	Ω	400 ± 10 & 352 ± 3				
Nominal range of excitation voltage (Bu) 额定电压	V	5~12				
Insulation resistance (Ris) at 50Vdc 绝缘电阻	MΩ	≥5000				
Service temperature range (Btu) 工作温度	°C	-30...+70				
Safe load limit (EL) & Breaking load (Ed) 安全承载 & 破坏载荷	% of Emax	150 & 300				
Protection class according to EN 60 529 (IEC 529) 保护等级		IP67				
Material : Measuring element 材料: 测量元件		Stainless or alloy steel				
Maximum capacity (Emax) 额定载荷	t	0.5	1,2	3	5	8
Deflection at Emax (snom) , approx 最大载荷下的变形量	mm	0.65			0.75	
Weight (G), approx 重量	kg	2.1			4.2	
Cable 电缆: Diameter 直径: φ6mm Length 长度	m	2.6			5.2	