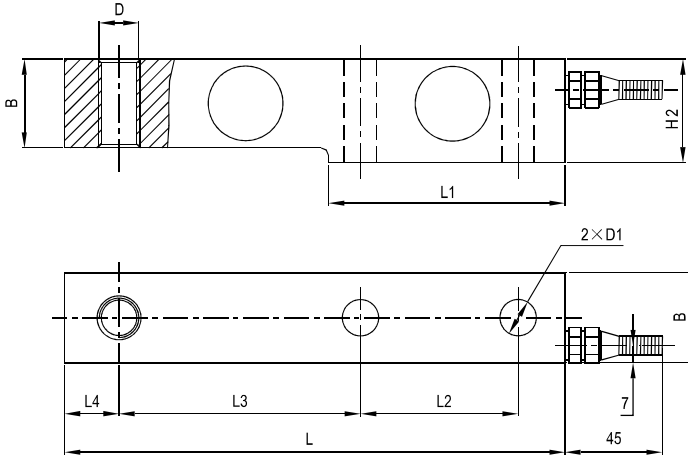


SB05 Load cells



地上衡、配料秤、料斗秤、平面台秤
Floor scale, blending scale, hopper scale, platform scale

Emax[t]	L	L1	L2	L3	L4	B	H2	D	D1
0.5,1,2,3	203	95	64	98	22	36.6	43	M16×1.5	ø13
5,8	235	110	66	124	22	48	52	M24×2	ø21

Specifications 技术说明 Exc+激励正 (Red,红);Exc-激励负(Black,黑);Sig+信号正(Green,绿);Sig-信号负(White,白)

Item 项目	Unit 单位	Parameter 参数				
Accuracy class to OIML R60 精度等级		D1		C2		
Maximum capacity (Emax) 额定载荷	t	0.5,1,2,3,5,8				
Minimum LC verification interval (Vmin) 最小检定分度值	% of Emax	0.0350		0.0200		
Sensitivity (Cn) / Zero balance 灵敏度/零点平衡	mV/V	2.0 ± 0.002 / 0 ± 0.02				
Temperature effect on zero balance (TK0) 温度对零点影响	% of Cn/10K	±0.0250		±0.02		
Temperature effect on sensitivity (TKc) 温度对灵敏度影响	% of Cn/10K	±0.0285		±0.02		
Hysteresis error (dhy) 滞后误差	% of Cn	±0.0330		±0.0270		
Non-linearity(dlin) 非线性误差	% of Cn	±0.0300		±0.0250		
Creep(dcr) over 30 min. 蠕变及蠕变恢复	% of Cn	±0.033		±0.030		
Input(RLc)&Output resistance (R0) 输入&输出电阻	Ω	400 ± 10 & 352 ± 3				
Nominal range of excitation voltage (Bu) 额定电压	V	5~12				
Insulation resistance (Ris) at 50Vdc 绝缘电阻	MΩ	≥5000				
Service temperature range (Btu) 工作温度	°C	-30...+70				
Safe load limit (EL) & Breaking load(Ed) 安全承载&破坏载荷	% of Emax	150 & 300				
Protection class according to EN 60 529 (IEC 529) 保护等级		IP67				
Material :Measuring element 材料: 测量元件		Stainless or alloy steel				
Maximum capacity (Emax) 额定载荷	t	0.5	1,2	3	5	8
Deflection at Emax (snom) ,approx 最大载荷下的变形量	mm	0.65			0.75	
Weight(G),approx 重量	kg	2.1			4.2	
Cable 电缆: Diameter 直径: ø6mm Length 长度	m	2.6			5.2	