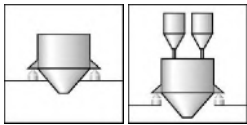


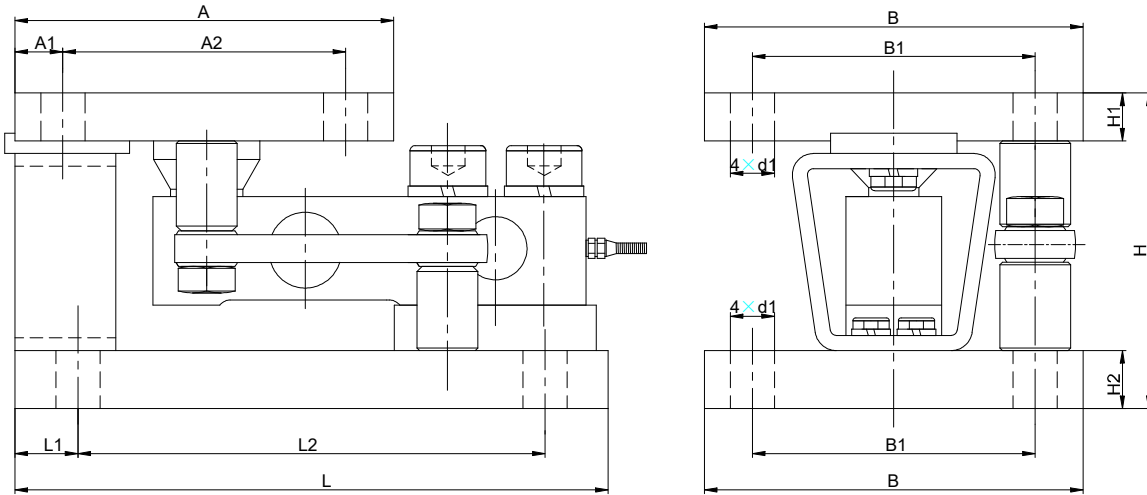
SB02-M2

Weighing Module for 0.5...3t



Special features特点

- Equipped with load cell SBB, class C2, C3 according to OIML R60
- With overload stop and stay rod
- Compact installation at minimum installation height
- Easy installation
- Two versions available: Galvanized or stainless steel
- Self-restoring due to pendulum bearing
- 用于精度等级为C2, C3的SBB传感器
- 有过载保护与限位机构
- 结构紧凑
- 安装简单
- 电镀材料与不锈钢材料可选
- 采取摆支撑有自复位功能



Emax[t]	A	A1	A2	L	L1	L2	B	B1	H	H1	H2	d1
0.5,1,2	114	12.5	89	177.5	12.5	152.5	114	89	105	17	17	∅13
3	114	12.5	89	177.5	12.5	152.5	114	89	108	19	19	∅13

Specifications 技术说明 Exc+激励正 (Red,红);Exc-激励负(Black,黑);Sig+信号正(Green,绿);Sig-信号负(White,白)

Maximum capacity 额定载荷	kg	500	1000	2000	3000
Limit load 安全载荷	% of Emax	120%			
Breaking load 破坏载荷	% of Emax	200%			
Total error of load cells 传感器综合性能	% of Emax	±0.02, ±0.03, ±0.05			
Material 材料:		Galvanized or stainless steel 电镀材料或不锈钢			
Weight (incl.load cell)重量	kg	7...8			
Adjustment range of the overload stop 过载保护范围	mm	≤0.33	≤0.25	≤0.45	≤0.8
Cable 电缆: Diameter直径 ∅5mm Length长度	m	3			