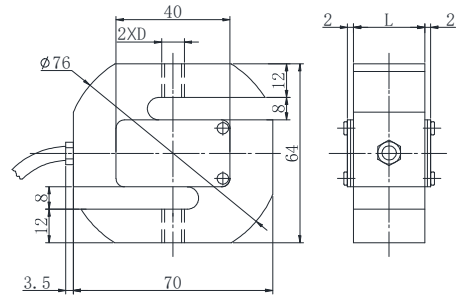


S03 Load cells

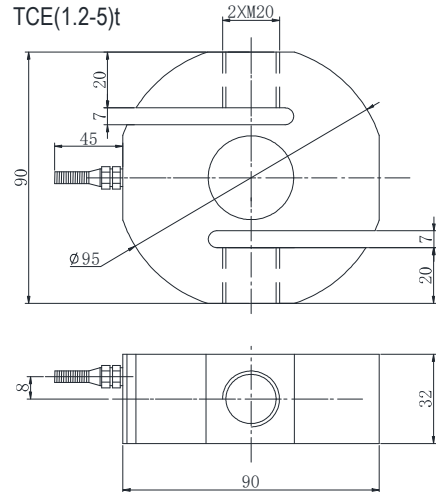


TCE(20-1000)kg

E _{max} [kg]	尺寸 (mm)	
	D	L
20~150	M8	12
200~500	M12	20
700~1000	M12	25



TCE(1.2-5)t



Specifications 技术说明 Exc+激励正 (Red,红);Exc-激励负(Black,黑);Sig+信号正(Green,绿);Sig-信号负(White,白)

Item 项目	Unit 单位	Parameter 参数	
		C2	C3
Accuracy class to OIML R60 精度等级		C2	C3
Maximum capacity (E_{max}) 额定载荷	t	0.1,0.2,0.25,0.3,0.5,1,2,5	
Minimum LC verification interval (V _{min}) 最小检定分度值	% of E _{max}	0.0200	0.0100
Sensitivity (C _n) 灵敏度	mV/V	2.0±0.002	
Zero balance 零点平衡	mV/V	0±0.03 / 0±0.02	
Temperature effect on zero balance (TK ₀) 温度对零点影响	% of C _n /10K	±0.02	±0.0170
Temperature effect on sensitivity (TK _c) 温度对灵敏度影响	% of C _n /10K	±0.02	±0.0170
Hysteresis error (d _{hy}) 滞后误差	% of C _n	±0.0270	±0.0180
Non-linearity(d _{lin}) 非线性误差	% of C _n	±0.0250	±0.0167
Creep(d _{cr}) over 30 min. 蠕变及蠕变恢复	% of C _n	±0.030	±0.0167
Input (R_{Lc}) & Output resistance (R_o) 输入&输出电阻	Ω	400 ± 10 & 352 ± 3	
Nominal range of excitation voltage (B_u) 额定电压	V	5~12	
Insulation resistance (R _{is}) at 50Vdc 绝缘电阻	MΩ	≥5000	
Service temperature range (B _{tu}) 工作温度	°C	-30...+70	
Safe load limit (E _L) & Breaking load(E _d) 安全承载&破坏载荷	% of E _{max}	120 & 200	
Protection class according to EN 60 529 (IEC 529) 保护等级		0.1t~1t:IP67;2t~5t:IP68	
Material :Measuring element 材料: 测量元件 Cable fitting 电缆配件 Cable sheath 电缆护套		Stainless or alloy steel Stainless steel or nickel-plated brass PVC	

Maximum capacity (E _{max}) 额定载荷	t	0.1,0.2,0.25,0.3,0.5	1	2	3	5
Deflection at E _{max} (s _{nom}) ,approx最大载荷下的变形量	mm	0.15	0.25	0.45		
Weight(G),approx 重量	kg	0.6	0.8	1.5		
Cable 电缆: Diameter 直径: Ø5mm Length长度	m	5				