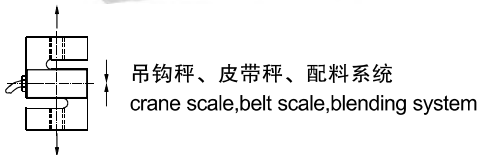
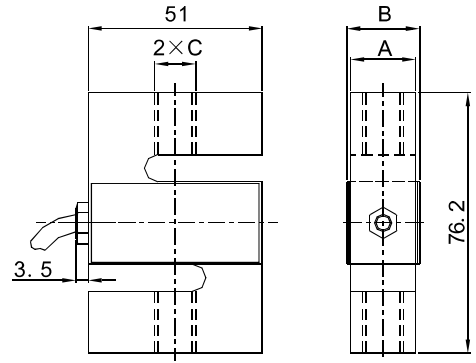


S02

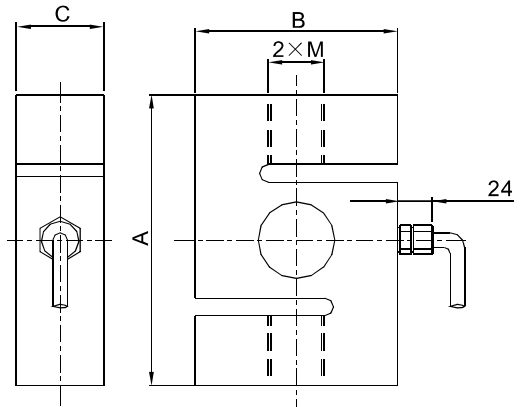
Load cells



Emax [klb]	A	B	C	M
5, 7.5	108	76.2	25.4	3/4-16UNF-2B
10	121	88.9	25.4	3/4-16UNF-2B
20	178	127	51	1 1/4-12UNF-2B



Emax [klb]	A	B	C
0.25, 0.3	12.4	16.6	3/8-24UNF-2B
0.5, 1, 1.5	19.1	23.3	1/2-20UNF-2B
2, 3	25.4	29.6	1/2-20UNF-2B



Specifications 技术说明 Exc+激励正 (Red,红);Exc-激励负(Black,黑);Sig+信号正(Green,绿);Sig-信号负(White,白)

Item 项目	Unit 单位	Parameter 参数	
Accuracy class to OIMLR 60 精度等级		C2	C3
Maximum capacity (Emax) 额定载荷	klb	0.25,0.3,0.5,1.1.5,2,3,5,7.5,10,20	
Minimum LC verification interval (Vmin) 最小检定分度值	% of Emax	0.0200	0.0100
Sensitivity (Cn) 灵敏度	mV/V	3.0±0.003	
Zero balance 零点平衡	mV/V	0±0.03	
Temperature effect on zero balance (TKo) 温度对零点影响	% of Cn/10K	± 0.02	± 0.0170
Temperature effect on sensitivity (TKc) 温度对灵敏度影响	% of Cn/10K	± 0.02	± 0.0170
Hysteresis error (dhy) 滞后误差	% of Cn	± 0.0270	± 0.0180
Non-linearity(dlin) 非线性误差	% of Cn	± 0.0250	± 0.0167
Creep(dcr) over 30 min. 蠕变及蠕变恢复	% of Cn	± 0.030	± 0.0167
Input (RLc) & Output resistance (Ro) 输入&输出电阻	Ω	400±10 & 352±3	
Nominal range of excitation voltage (Bu) 额定电压	V	5~15	
Insulation resistance (Ris) at 50Vdc 绝缘电阻	MΩ	≥ 5000	
Service temperature range (Btu) 工作温度	℃	-30...+70	
Safe load limit (EL) & Breaking load (Ed) 安全承载&破坏载荷	% of Emax	120 & 200	
Protection class according to EN 60 529 (IEC 529) 保护等级		IP65(0.25~3)klb/IP68(5~20)klb	
Material :Measuring element 材料: 测量元件 Cable fitting 电缆配件 Cable sheath 电缆护套		Stainless or volly steel Stainless steel or nickel-plated brass PVC	
Cable 电缆: Diameter 直径: ∅5mm Length 长度	m	5	