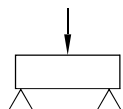
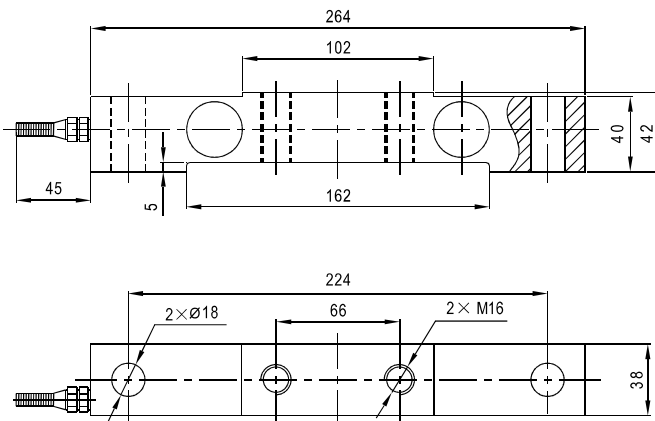


QS06

Load cells



轻轨衡、天车秤等

Light railway scale, overhead crane scale

Specifications 技术说明

Exc+激励正 (Red,红);Exc-激励负(Black,黑);Sig+信号正(Green,绿);Sig-信号负(White,白)

Item 项目	Unit 单位	Parameter 参数
Accuracy class to OIML R60 精度等级		C1
Maximum capacity (Emax) 额定载荷	t	1.5,3,5
Minimum LC verification interval (Vmin)最小检定分度值	% of Emax	0.0200
Sensitivity (Cn) / Zero balance灵敏度/零点平衡	mV/V	1.5 ± 0.005 / 0 ± 0.02
Temperature effect on zero balance (TK0) 温度对零点影响	% of Cn/10K	±0.02
Temperature effect on sensitivity (TKc) 温度对灵敏度影响	% of Cn/10K	±0.02
Hysteresis error (dhy) 滞后误差	% of Cn	±0.1000
Non-linearity(dlin)非线性误差	% of Cn	±0.0500
Creep(dcr) over 30 min. 蠕变及蠕变恢复	% of Cn	±0.030
Input (RLC) & Output resistance (R0)输入&输出电阻	Ω	750 ± 10 & 703 ± 2
Nominal range of excitation voltage (Bu) 额定电压	V	5~12
Insulation resistance (Ris) at50Vdc 绝缘电阻	MΩ	≥5000
Service temperature range (Btu)工作温度	°C	-30...+70
Safe load limit (El) & Breaking load(Ed)安全承载&破坏载荷	% of Emax	150 & 300
Protection class according to EN 60 529 (IEC 529) 保护等级		IP68
Material :Measuring element 材料: 测量元件 Cable fitting 电缆配件/Cable sheath 电缆护套		Alloy steel Nickel-plated brass/PVC
Maximum capacity (Emax)额定载荷	t	1.5 3 5
Deflection at Emax (snom) ,approx最大载荷下的变形量	mm	0.45
Weight(G),approx 重量	kg	2.6
Cable 电缆: Diameter 直径: Ø6mm Length长度	m	3