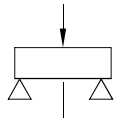
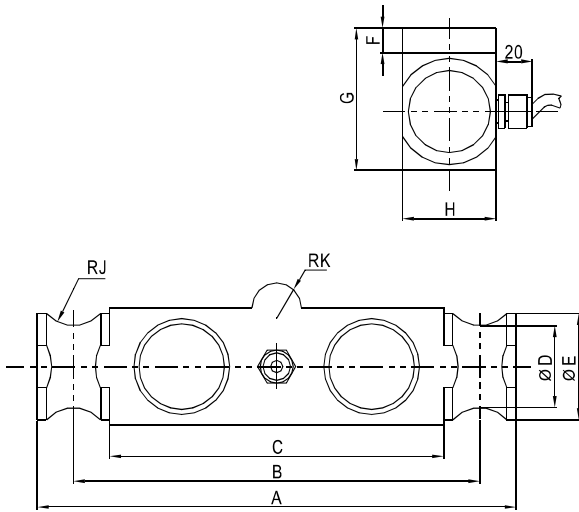


# QS04 Load cells



汽车衡、仓储秤等  
Truck scale, warehouse scale

Emax [klb]	A	B	C	D	E	F	G	H	J	K
25, 40, 50	210	185	159	41	51	13	64	51	13	13
60, 75	292	254	216	43	56	13	76	51	21	13
100, 125	368	317	267	62	81	21	99	74	25	38

## Specifications 技术说明 Exc+激励正 (Red,红);Exc-激励负(Black,黑);Sig+信号正(Green,绿);Sig-信号负(White,白)

Item 项目	Unit 单位	Parameter 参数	
Accuracy class 精度等级		0.05	0.03
<b>Maximum capacity (Emax) 额定载荷</b>	<b>klb</b>	<b>25,40,50,60,75,100,125</b>	
Minimum LC verification interval (Vmin) 最小检定分度值	% of Emax	0.0200	0.0100
<b>Sensitivity (Cn)/Zero balance 灵敏度/零点平衡</b>	<b>mV/V</b>	<b>3.0 ± 0.003 / 0 ± 0.03</b>	
Temperature effect on zero balance (TK0) 温度对零点影响	% of Cn/10K	± 0.02	
Temperature effect on sensitivity (TKc) 温度对灵敏度影响	% of Cn/10K	± 0.02	
Hysteresis error (dhy) 滞后误差	% of Cn	± 0.0500	± 0.0270
Non-linearity(dlin) 非线性误差	% of Cn	± 0.0500	± 0.0250
Creep(dcr) over 30 min. 蠕变及蠕变恢复	% of Cn	± 0.030	± 0.020
<b>Input (RLC) &amp; Output resistance (R0) 输入&amp;输出电阻</b>	<b>Ω</b>	<b>750 ± 10 &amp; 703 ± 3.5</b>	
<b>Nominal range of excitation voltage (Bu) 额定电压</b>	<b>V</b>	<b>5~15</b>	
Insulation resistance (Ris) at 50Vdc 绝缘电阻	MΩ	≥ 5000	
Service temperature range (Btu) 工作温度	°C	-30...+70	
Safe load limit (EL) & Break load(Ed) 安全承载&破坏载荷	% of Emax	120 & 200	
<b>Protection class according to EN60529 (IEC 529) 保护等级</b>		<b>IP68</b>	
Material :Measuring element 材料: 测量元件 Cable fitting 电缆配件 Cable sheath 电缆护套		Stainless or volly steel Stainless steel or nickel-plated brass PVC	

Maximum capacity (Emax) 额定载荷	klb	25	40	50	60	75	100	125	
Deflection at Emax (snom), approx 最大载荷下的变形量	mm	0.55			0.65		0.75		
Cable 电缆: Diameter 直径: Ø6mm Length 长度	m	12				16			