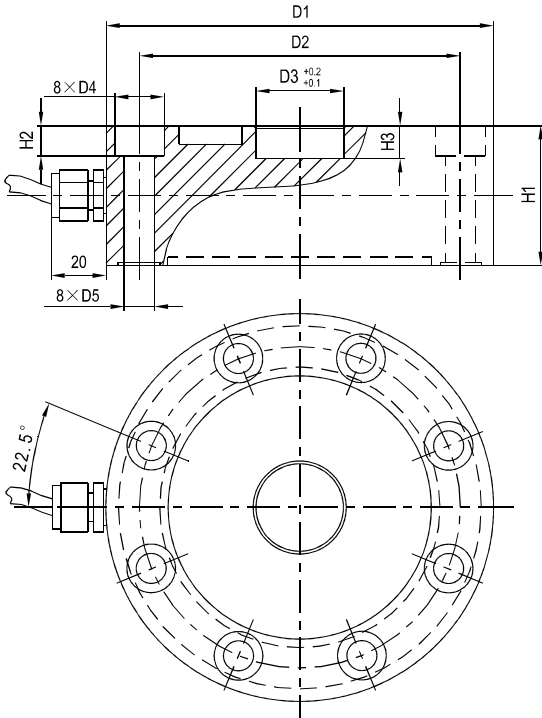
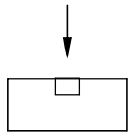


## LFS03 Load cells



配料秤、包装秤、动态检测系统、台秤  
Blending scale, packing scale, dynamic testing system, platform scale



Emax[t]	D1	D2	D3	D4	D5	H1	H2	H3
2,3,5	ø110	ø95	ø26.5	ø11	ø7	42	10	15
10	ø142	ø118	ø32	ø17	ø11	49	13	11

### Specifications 技术说明 Exc+激励正 (Red,红);Exc-激励负(Black,黑);Sig+信号正(Green,绿);Sig-信号负(White,白)

Item 项目	Unit 单位	Parameter 参数			
Accuracy class 精度等级		0.1			
<b>Maximum capacity (Emax) 额定载荷</b>	<b>t</b>	<b>2,3,5,10</b>			
Minimum LC verification interval (Vmin) 最小检定分度值	% of Emax	0.0200			
Sensitivity (Cn) / Zero balance 灵敏度/零点平衡	mV/V	2.0±0.005 / 0±0.02			
Temperature effect on zero balance (TK0) 温度对零点影响	% of Cn/10K	±0.0175			
Temperature effect on sensitivity (TKc) 温度对灵敏度影响	% of Cn/10K	±0.0200			
Hysteresis error (dhy) 滞后误差	% of Cn	±0.1000			
Non-linearity(dlin) 非线性误差	% of Cn	±0.1000			
Creep(dcr) over 30 min. 蠕变及蠕变恢复	% of Cn	±0.0500			
<b>Input (RLc) &amp; Output resistance (R0) 输入&amp;输出电阻</b>	<b>Ω</b>	<b>750±10 &amp; 703±2</b>			
<b>Nominal range of excitation voltage (Bu) 额定电压</b>	<b>V</b>	<b>5~12</b>			
Insulation resistance (Ris) at 50Vdc 绝缘电阻	MΩ	≥5000			
Service temperature range (Btu) 工作温度	°C	-30...+70			
Safe load limit (EL) & Breaking load(Ed) 安全承载&破坏载荷	% of Emax	150 & 200			
<b>Protection class according to EN 60 529 (IEC 529) 保护等级</b>		<b>IP67</b>			
Material :Measuring element 材料:测量元件 Cable fitting 电缆配件/Cable sheath 电缆护套		Alloy steel Stainless steel /PVC			
Maximum capacity (Emax) 额定载荷	t	2	3	5	10
Deflection at Emax (snom), approx 最大载荷下的变形量	mm	<0.3			<0.5
Weight(G),approx 重量	kg	2.5			4.8
Cable 电缆: Diameter 直径:ø6mm Length长度	m	5			