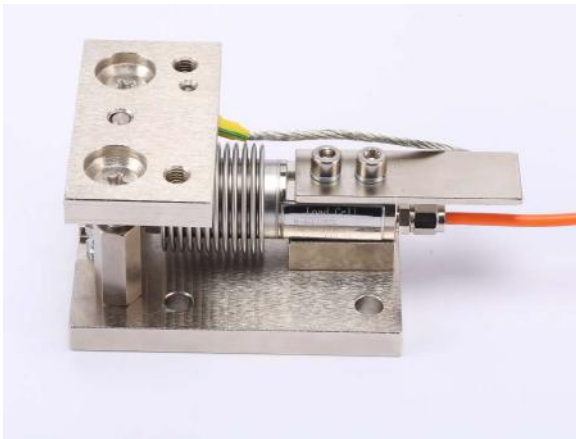


HSX01-M1

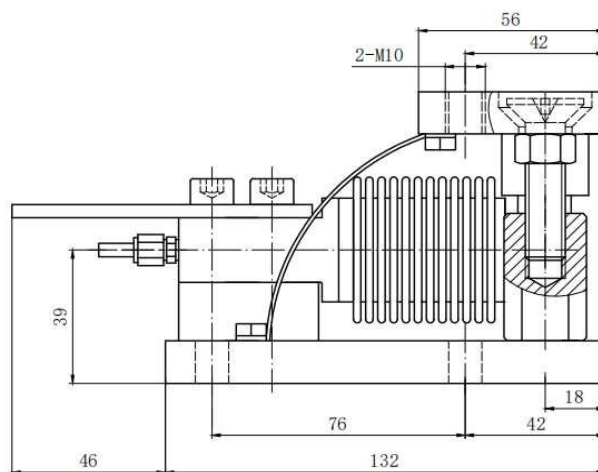
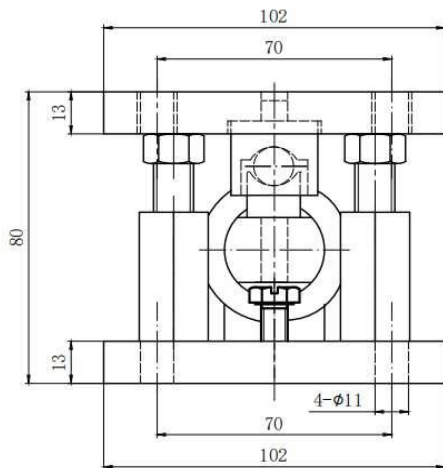
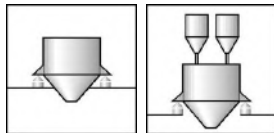
Weighing module for 50kg...500kg



Special features特点

Equipped with load cell BLA, class C2, C3 according to OIML R60
 With overload stop and stay rod
 Compact installation at minimum installation height
 Easy installation
 Two versions available: Galvanized or stainless steel
 Self-restoring due to pendulum bearing
 With anti-liftoff device and lifting device

- 用于精度等级为C2, C3的BLA传感器
- 有过载保护与支撑杆
- 结构紧凑
- 安装简单
- 电镀材料与不锈钢材料可选
- 采取摆支撑有自复位功能
- 带有升力与反升力装置



Specifications 技术说明 Exc+激励正 (Red,红);Exc-激励负(Black,黑);Sig+信号正(Green,绿);Sig-信号负(White,白)

Maximum capacity 额定载荷		50	75	100	200	250	300	500
Limit load 安全载荷	% of Emax	120%						
Breaking load 破坏载荷	% of Emax	200%						
Total error of load cells 传感器综合性能	% of Emax	±0.02, ±0.03, ±0.05						
Material 材料:		Galvanized or stainless steel 电镀材料或不锈钢						
Weight (incl.load cell)重量	kg	8...9						
Adjustment range of the overload stop 过载保护范围	mm	≤0.33	≤0.25	≤0.45	≤0.8			
Cable 电缆: Diameter直径 ∅5mm Length长度	m	3						